



## STEP ONE

### Shade Slat Assembly

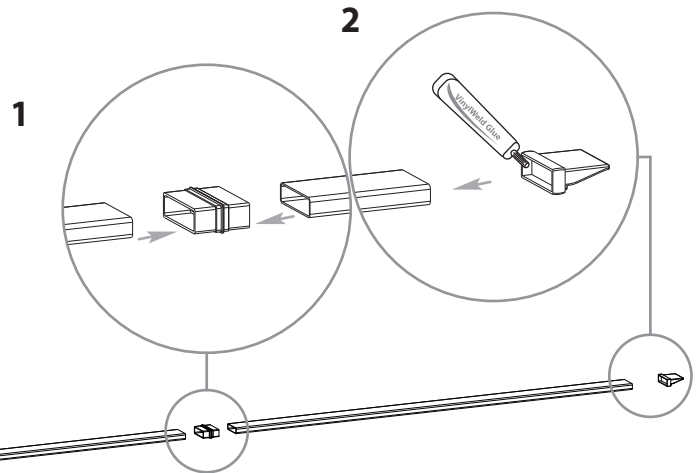
**1**

Assemble shade slats by inserting the two joiners into the inner shade slat followed by the two outer shade slats. Push firmly until extrusion bottoms out inside joiner.

**No screws are necessary.**

**2**

Complete the assembly by gluing a decorative end cap at each end as shown.



## STEP TWO - A

### Retroactive Shade Slats Installation

**1**

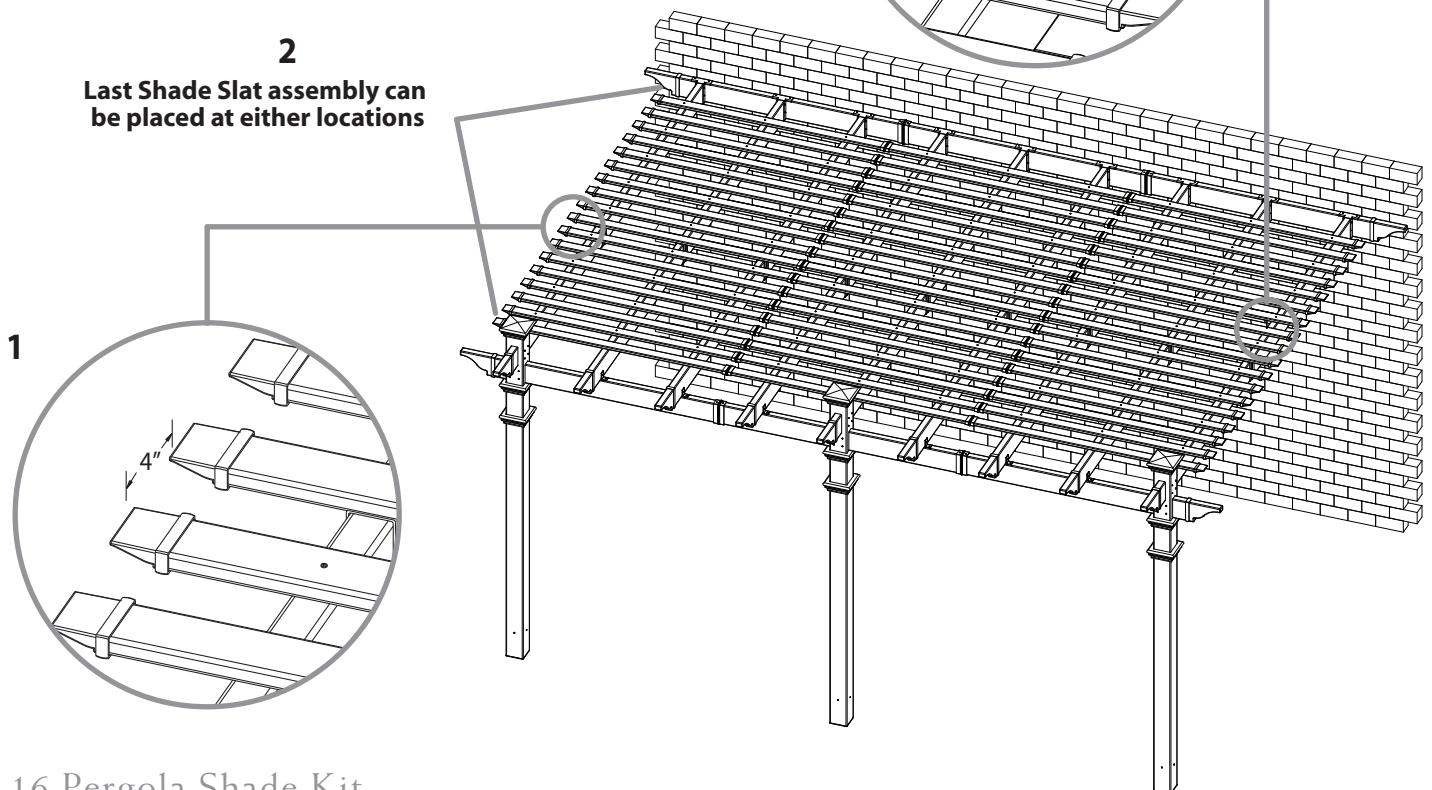
If this kit is added afterwards, simply place EIGHT of the new shade slat assemblies in between the existing shade slats as shown. The new spacing between the shade slats is now 4 inches.

**2**

The ninth shade slat assembly can go either closer to the wall or the pergola posts (latter shown).

**2**

Last Shade Slat assembly can be placed at either locations



**3**  
Install one 2 1/2" screw at each intersection of rafter and shade slat.

**3**

